



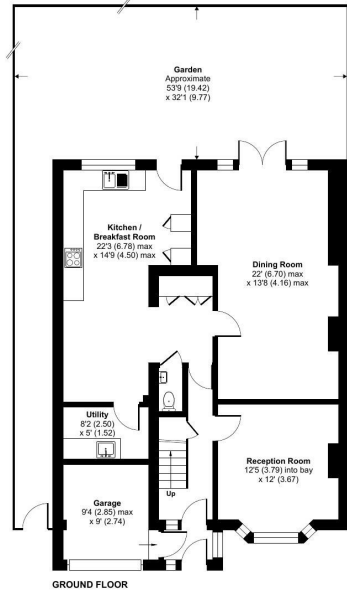
GUIDE PRICE

£925,000

Kechill Gardens

Hayes, BR2 7NB

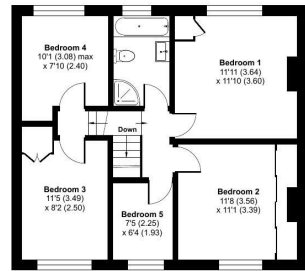
EPC RATING: D COUNCIL TAX BAND: E



Kechill Gardens, Hayes, BR2

Approximate Area = 1479 sq ft / 137.4 sq m
 Garage = 78 sq ft / 7.2 sq m
 Total = 1557 sq ft / 144.6 sq m

For identification only - Not to scale



FIRST FLOOR

Floor plan produced in accordance with RICS Property Measurement 2nd Edition, incorporating International Property Measurement Standards (IPMS2 Residential). © nichecom 2026. Produced for Withers & Curtis. REF: 1472961



Energy Efficiency Rating		Current	Potential
Very energy efficient - lower running costs			
(92 plus)	A		
(81-91)	B		
(69-80)	C		
(55-68)	D	60	70
(39-54)	E		
(21-38)	F		
(1-20)	G		
Not energy efficient - higher running costs			
England & Wales		EU Directive 2002/91/EC	

Agents Note: Whilst every care has been taken to prepare these particulars, they are for guidance purposes only. All measurements are approximate and are for general guidance purposes only and whilst every care has been taken to ensure their accuracy, they should not be relied upon and potential buyers/tenants are advised to recheck the measurements



OFFICE ADDRESS

57 Station Approach
 Hayes
 Kent
 BR2 7EB

OFFICE DETAILS

020 8462 0360
 infohy@sinclairhammelton.co.uk
<https://www.sinclairhammelton.co.uk>
 for-sale-in-hayes/